



User Manual

IP-Mon ServerMon User Manual

Welcome to the user guide to the IP Mon package. This guide will take you through the necessary steps to use the software as efficiently as possible as well as being a useful reference guide to the software in future..

Roger Fraser
13/05/2008

Document Reference No.: IPMon01
Issue: 0.1
Status: Final

IPMon ServerMon Solution Users Manual

Distribution:	<ol style="list-style-type: none"> 1. To all authorised IPMon Users 2. 3. 4. 5.
----------------------	--

MODIFICATION RECORD

Issue	Date	Author	Approved	Pages
A	17/09/2007	Innocent Ngongoma	Version	35

Format

Original MS Word

Distribution Acrobat.PDF

Contents

- 1. Introduction**
- 2. Company Profile**
- 3. Starting Up**

- 4. Installation**
- 5. General configuration tab**

- 6. WMI Sensors tab**
- 7. Service Control Tab**
- 8. Diagnostics Tab**
- 9. Setting the Service Options**

Introduction

Welcome to the user guide to the IP Mon package. This guide will take you through the necessary steps to use the software as efficiently as possible as well as being a useful reference guide to the software in future. IP Mon is a world first plug and use data concentrator, that use IP based technologies to enable much easier integration with existing IT infrastructure and lower installation costs. By combining sensor information and video capture footage in one easy to use application, IP Mon allows you to effectively monitor a whole range of possibilities.

Company Profile

Live Monitoring is a provider of real-time production and process monitoring systems. The business was founded in 2006 and the company headquarters are presently located in KwaZulu Natal. Live Monitoring develops market and support a totally independent line of monitoring software. The first product was designed primarily for the injection moulding and textile industries. However, through continued customer support and product innovation Live Monitoring has quickly developed a number of unique, flexible and cost-effective software solutions which broadened its product base to systems for all types of industries.

Corporate Mission Statement

About this user manual

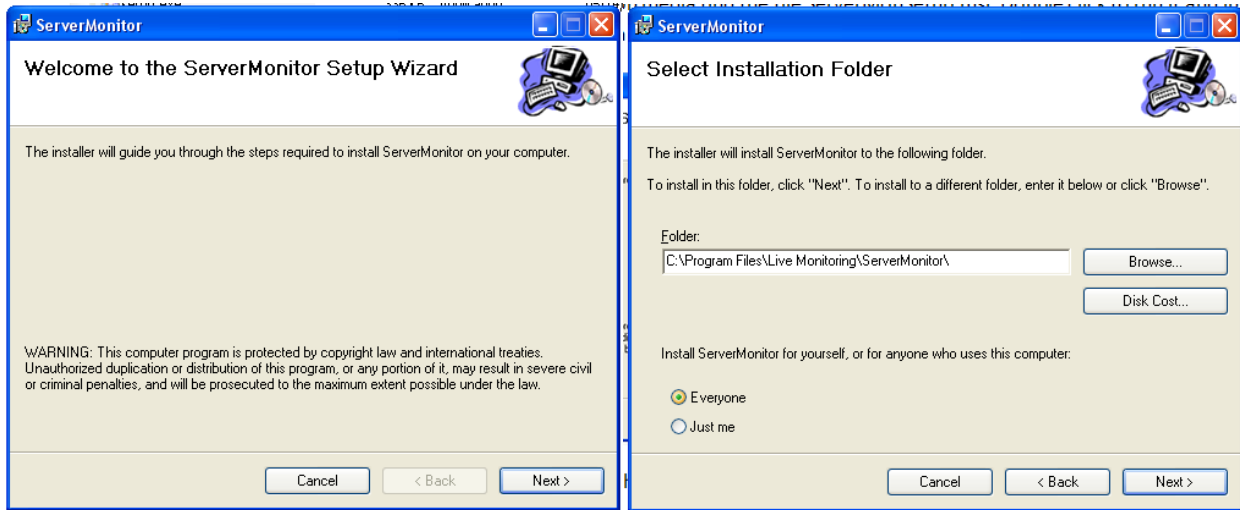
This guide will take you through each step that you will need to take to effectively use IP Mon, from setting up a sensor to installing a camera.

Starting Up

If your computer is off turn it on and log in. Make sure you are on the network .

Installation

In the installation media find the file ServerMonSetup.msi .Double click to run it and install it to the default location as suggested .

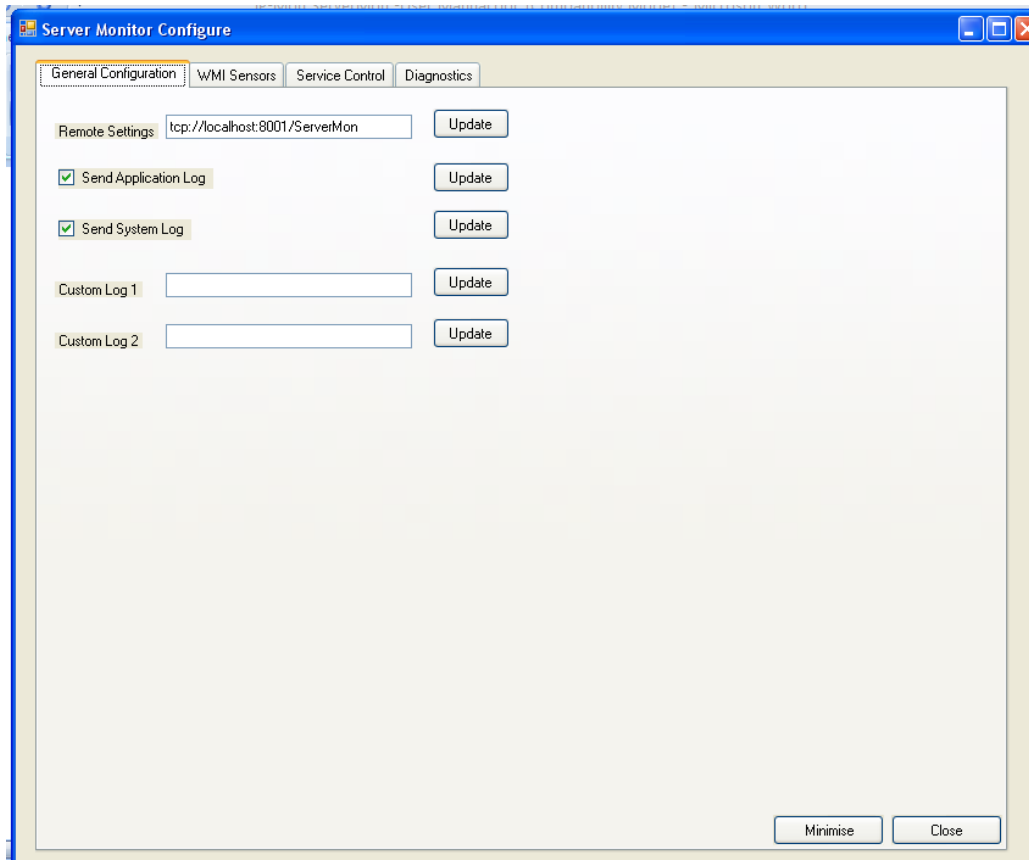


This will install the windows service and ServerMon configuration application. It will also create a shortcut to the configuration application in the start->all programs ->Live Monitoring



Using the configuration application:

The program starts on the general configuration tab :



General configuration tab

This page allows you to set the general configuration settings starting with the IPMon Servers IP address and port .In general you should not need to change the port unless instructed to by the administrator .Change the name Localhost to either the PC-Name i.e. IPMonServer or the IP-Address i.e. 192.168.0.254 and leave the rest of the setting .It should look something like :tcp://192.168.0.254:8001/ServerMon

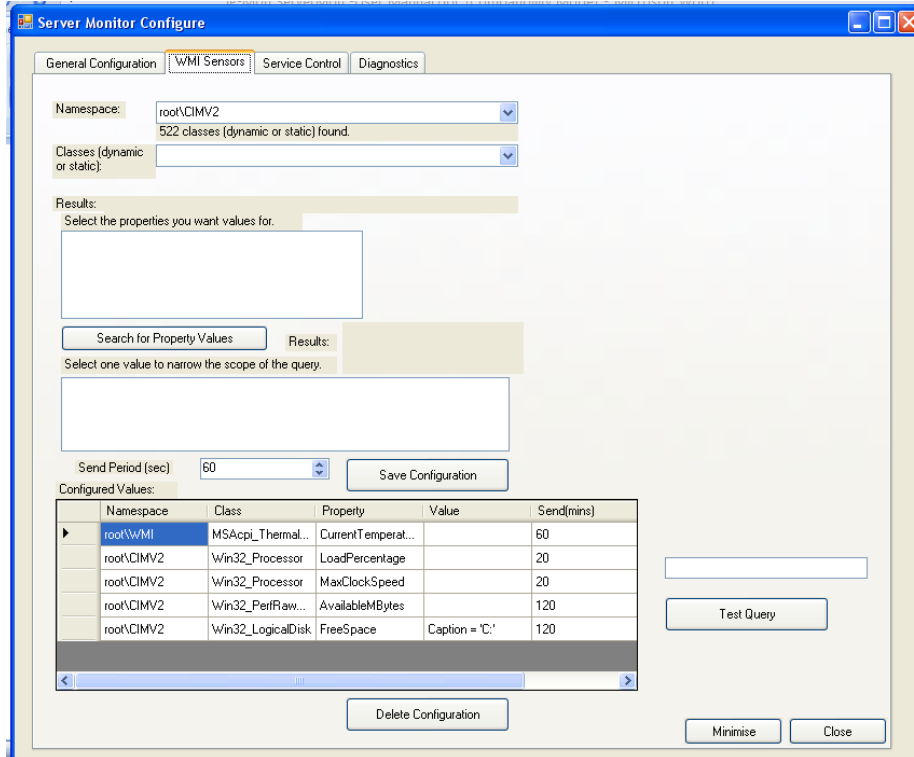
When complete click Update to save the change.

You can then choose to send Application, System and Custom logs to the server .

When complete click Update to save the change.

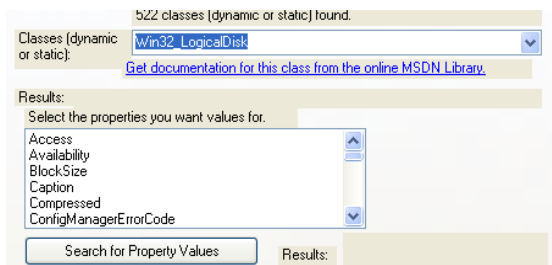
WMI Sensors tab

This tab allows you to setup the WMI (windows management interfaces) values you want to log/alert on in IPMon.



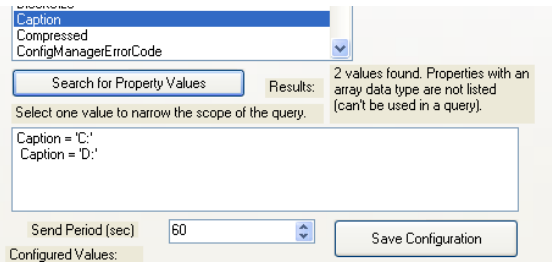
Choose the root namespace from the dropdown .Most windows values can be obtained from the default root\CIMV2 while most installed applications i.e. MS SQL,MS Exchange etc will be found under root\WMI . For detailed explanations of the numerous classes it is suggested you go to the following Microsoft website : [http://msdn.microsoft.com/en-us/library/aa394572\(VS.85\).aspx](http://msdn.microsoft.com/en-us/library/aa394572(VS.85).aspx) .

The available classes for this namespace are listed in the classes dropdown box .Select the class you are interested in and the available properties box will list the available properties such as Caption,Free Space ,Name etc.



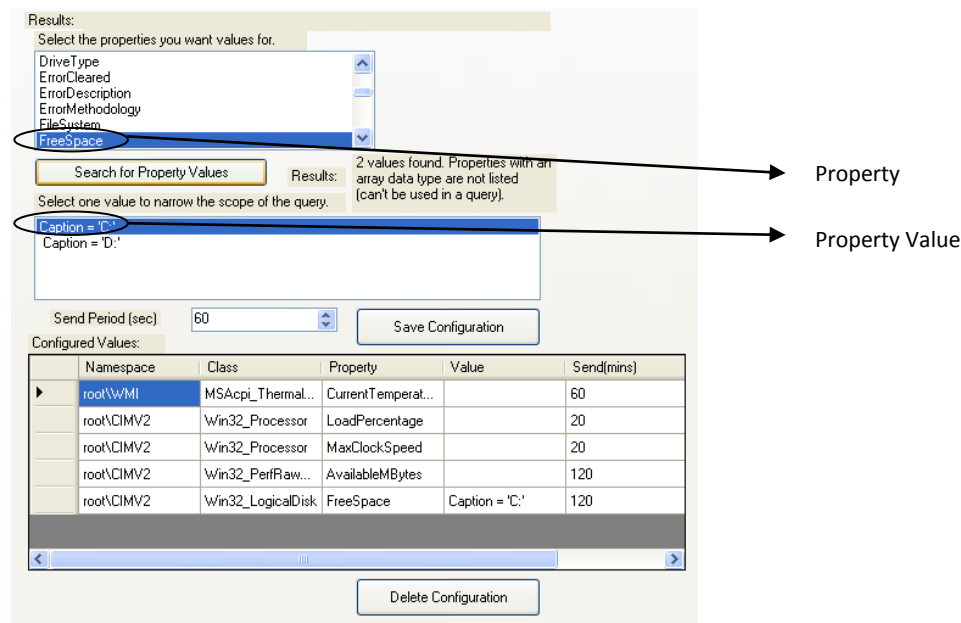
If there is only one instance you want to monitor click on the property you wish to monitor ,select a send period in seconds and choose save configuration.

If there are multiple instances of an item on the host you will need to specify which one to monitor else by default it will send them all as one item and overwrite the previous values. Click on the defining property such as caption or id and click Search for property values .The available property values will be

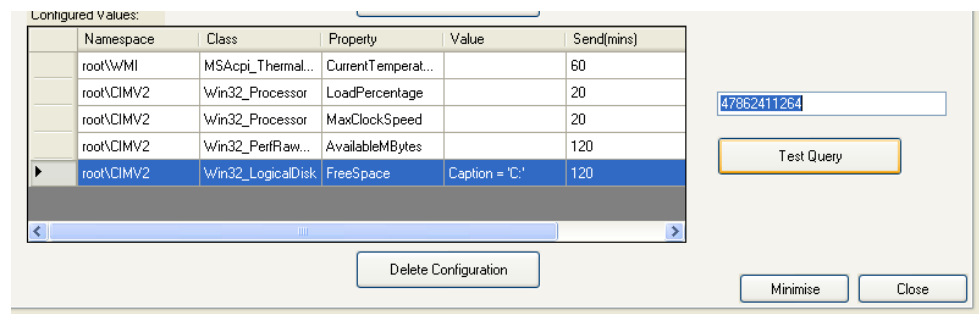


listed in the list box below the button.

Now choose the property you want to monitor and click the property value you want to filter by.



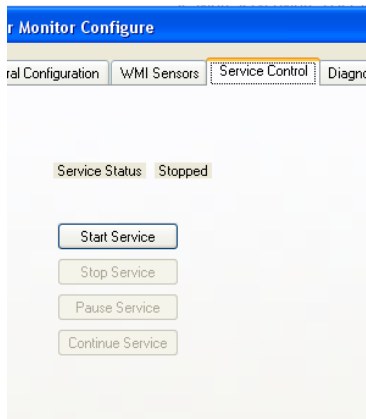
Click on save and it will be added to the list of configured values .To test a configuration click on the configured values then click the test button .The result of the query is shown in the text box above the button.



To delete a configured value choose the line to delete by clicking on it .Press delete .Confirm the action requested.

Service Control Tab

The service control tab allows you to start, Stop or reset the service. It is recommend that you reset the service after making any changes to ensure they get populated to the IPMon server. On restart the configured values should be sent to the server and new sensors created to store the historic logs. We suggest the service is set to start Automatically .This needs to be done as bellow in Setting the service options.

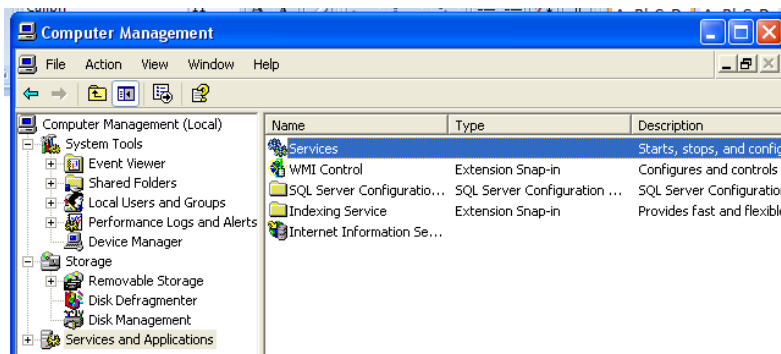


Diagnostics Tab

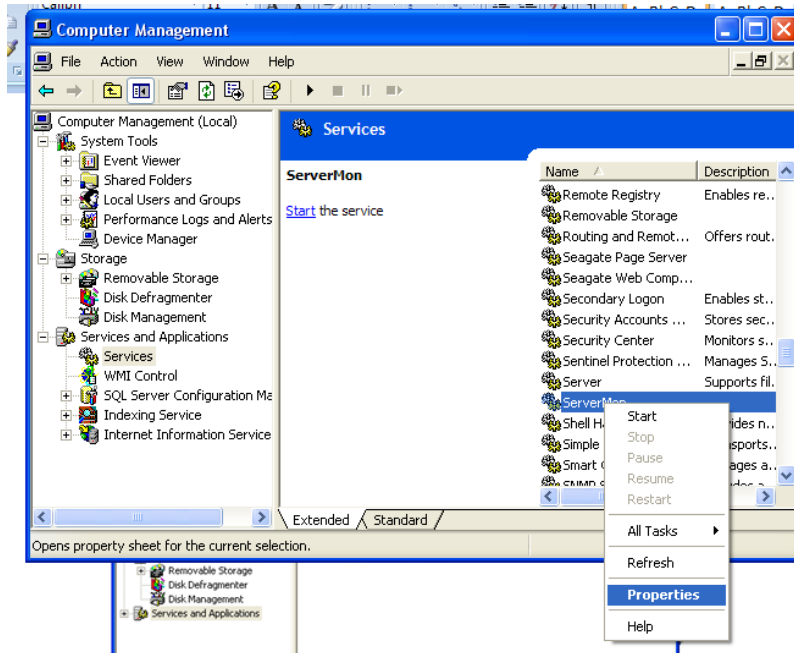
Not yet implemented.

Setting the Service Options

We recommend that you set the service to start automatically .You can do this by going to computer management (right click on computer and selecting manage).In the manager console click Services and Applications then double click Services.



In the services list search for ServerMon service .Right click and go to properties :



In the properties set the startup type to Automatic and choose apply .Start the service and click ok.

Alarms and Alerts

To set alarms and alerts see the standard IPMon users Manual