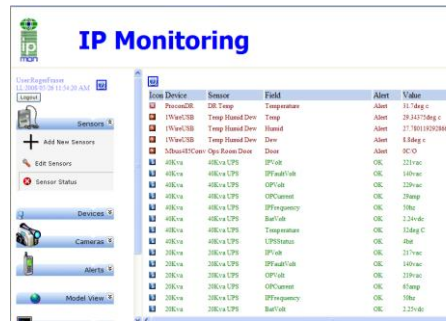


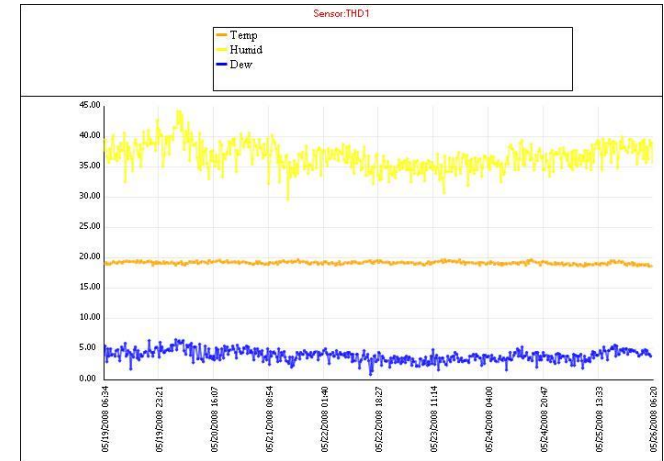


IPMON MONITORING SOLUTIONS

Live Monitoring's new IPMon solution monitors and alerts on the status of sensors on an IP Based network including: power supply, controlled air & humidity levels ,access control ,UPS status ,current being drawn ,temperature ,humidity ,dew point ,generator status ,vibration ,speed ,rotation ,status ,count ,quantity ,SNMP ,SQL Status, HTTP Status ,Server Log, Server status , WMI logging, luminescence & runtime and video or static images .It can be interfaced to any device with an analogue or digital signal.



monitoring IT



Server Rooms, Data centers

Power monitoring, Status Alerting

High value assets

Application:

- The IPMon server collects data from the sensors and devices at the installed site.
- The sensor data is stored in a database and the video data is stored in a special data format.
- If the data exceeds a custom client set threshold then alerts are generated and sent via email\SMS to the contacts that have been set as per a schedule.
- The data is displayed via web pages as graphs or text as requested by users. There is also a mobile web portal for remote access to the data.
- Reports can be generated and emailed to interested parties on a set periodic basis .These show graphs of values and video data and alerts sent.



7 Limpus road ,Pinetown,3610

Phone: 0317086642

Fax: 0866181075

www.livemonitoring.co.za

admin@livemonitoring.co.za



