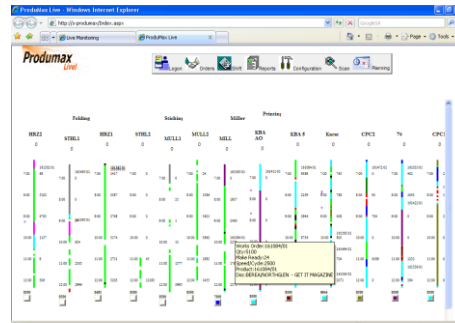


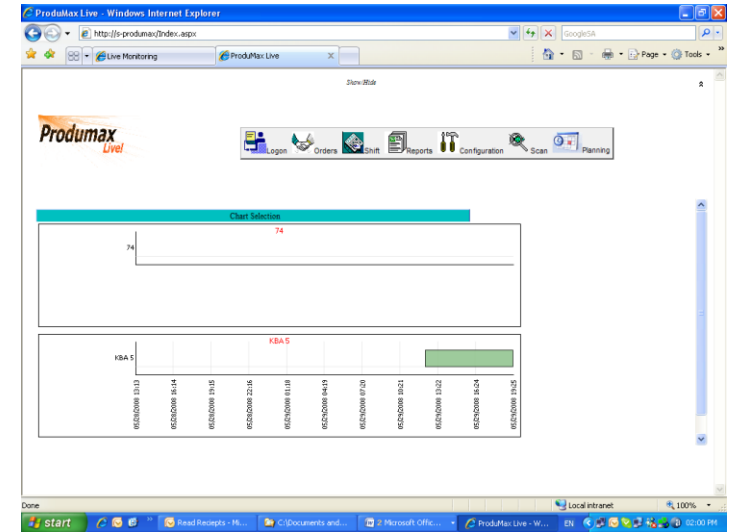
Produmax Live!



PRODUMAX LIVE SOLUTION

Live Monitoring's Produmax Live solution provides real time production information to people and systems within the organization. The product allows you to see your entire plant in real time. Produmax Live® integrates with new and old equipment to provide a unified ,single view of the entire plant status and efficiency. Produmax Live provides a settings and resolution knowledge base to keep track of issues. It also has a basic planning function to see machine loading .

monitoring IT



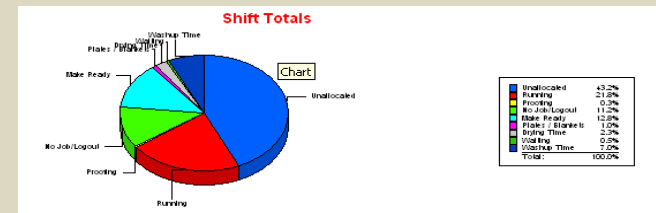
Plastic Injection molding, Blow Molding , Extrusion .

Printing ,Label Printing.

Textiles .Line production

Application:

- Produmax Live is a production and downtime monitoring and reporting tool.
- It enables the flow of data between the factory floor and management.
- It has a patented graphic screen that allows for the full factory status to be read at a glance.
- There are extensive reports that allow for data ranging from Efficiency, productivity, downtime, shift times and lost time.



7 Limpus road ,Pinetown,3610

Phone: 0317086642

Fax: 0866181075

www.livemonitoring.co.za

admin@livemonitoring.co.za



IT solutions at work for you even when you are not!

Maximizing your asset availability

The system is designed to allow easy integration and customization of new machinery and sensors
.We can rapidly implement customised screens that suit your requirements.

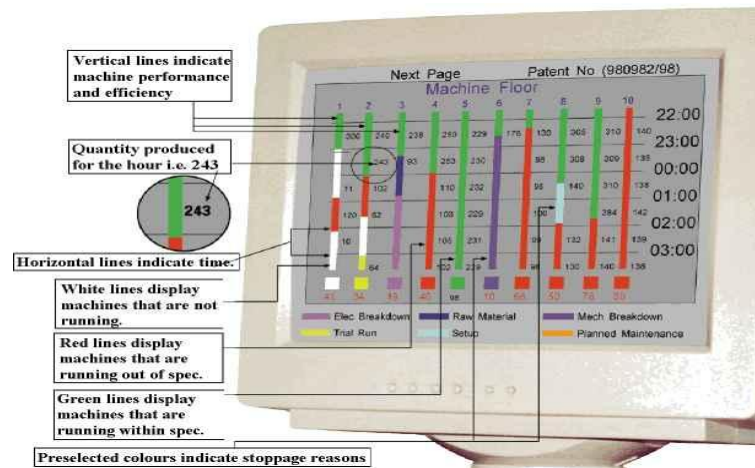
WEB BASED

- INTERFACE VIA WEB SOLUTION.
- EASY ACCESS TO SYSTEM DATA FROM ANYWHERE IN THE WORLD.

flexible solutions that match your business needs

Overview

- The ProduMax server collects data from the production machinery using various interfaces such as OPC and PLC drivers.
- The data is stored in a database ,usually MS SQL.
- The data is used to generate ProduTech's patented display
- Reports are customised for each customer.



Connectivity:



- Interfaces with Syspro , Prism and Pecas ERP to exchange data.
- Simple text import and export of data.
- Custom designed interfaces can easily be added



Modules:

- ProduMax Server-Collects data from PLC and OPC sources and saves it to database for retrieval by Produmax clients.
- Produmax Windows Client-Windows based client .
- Produmax Messenger – Adds alerting functionality to monitor downtime events.
- Produmax Live Client –Web interface to display the patented ProduMax GUI on a web browser to enable the data to be viewed from anywhere.



Printing

