

Steam Mon

SteamMon

SteamMon Focus:

- Steam Monitoring Solution is used to monitor the status of Spirax steam monitoring equipment.
- The server records the system data into the database and the user can view graphs of the system status.
- These graphs can also be printed out.

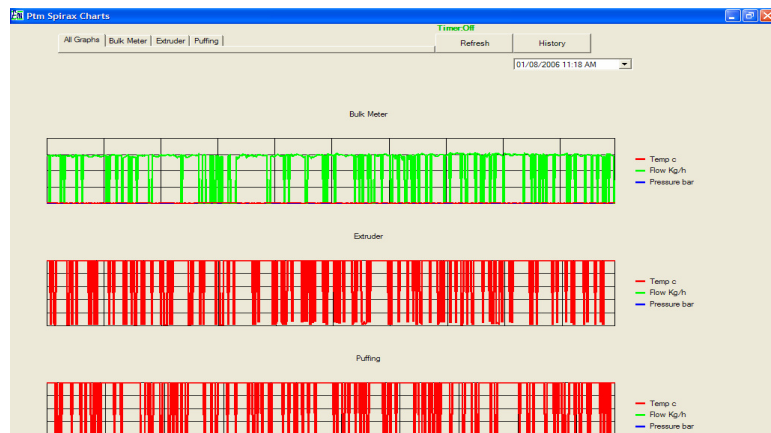


Diagram 1 SteamMon Interface

Clients:

- King Foods Potchifstroom

Application:

- The SteamMon server collects data from the spirax sensors , computers and devices at the installation using various interfaces such as 232,485 & or Ethernet.
- The data is stored into a MS Access database.
- The data is used to generate charts in the user application (see diagram 1 above).
- Reports can be printed from the displayed graph.

Cost:

- Costs vary per installation a sample cost sheet is available on request.

Interfaces:

- SteamMon can interface to standard Spirax equipment using the defined Spirax Ascii protocol.
- It can also read the current value from the M750 display units using the Modbus protocol.

Target Market:

- Any site where there is a need to record data from the Spirax monitoring equipment.

Technology:

- Windows based server with a windows GUI application.
- Database stored in MS Access.
- Reports are manually generated by users as needed.

Partnerships /Sales channels:

- Spirax customers , Other M750 display users (fridges ,industrial equipment)

System Layout :

- See attached system layout.

System Layout:

